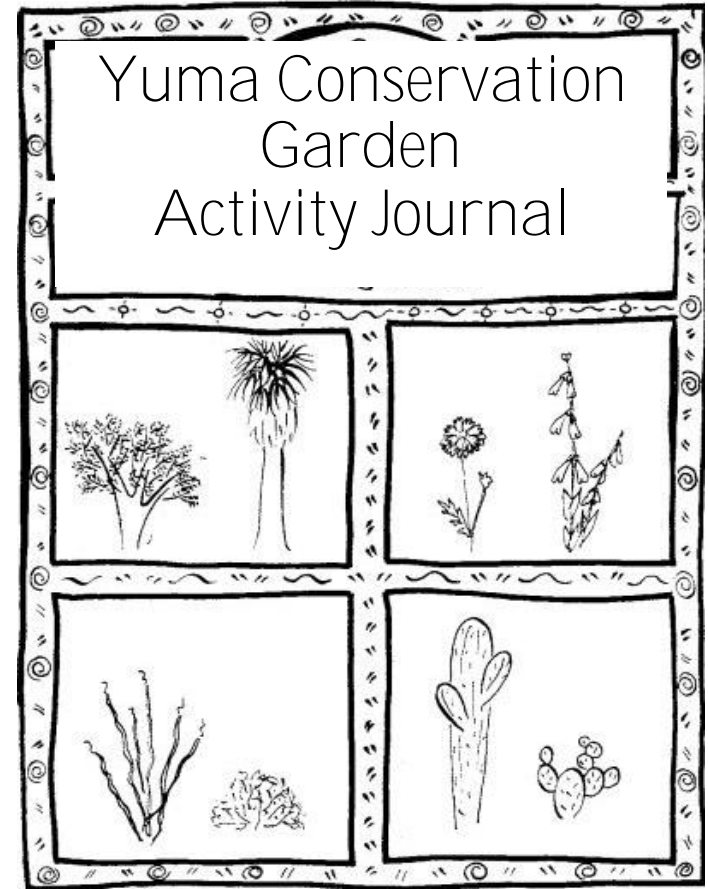
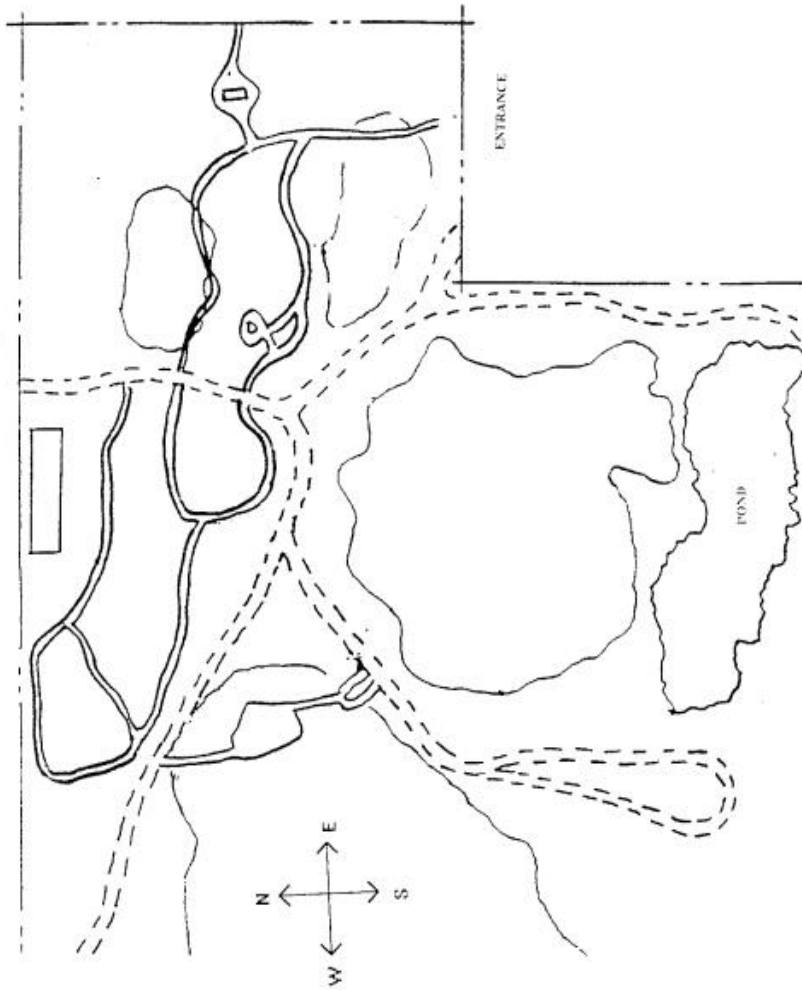


Yuma Conservation Garden Map

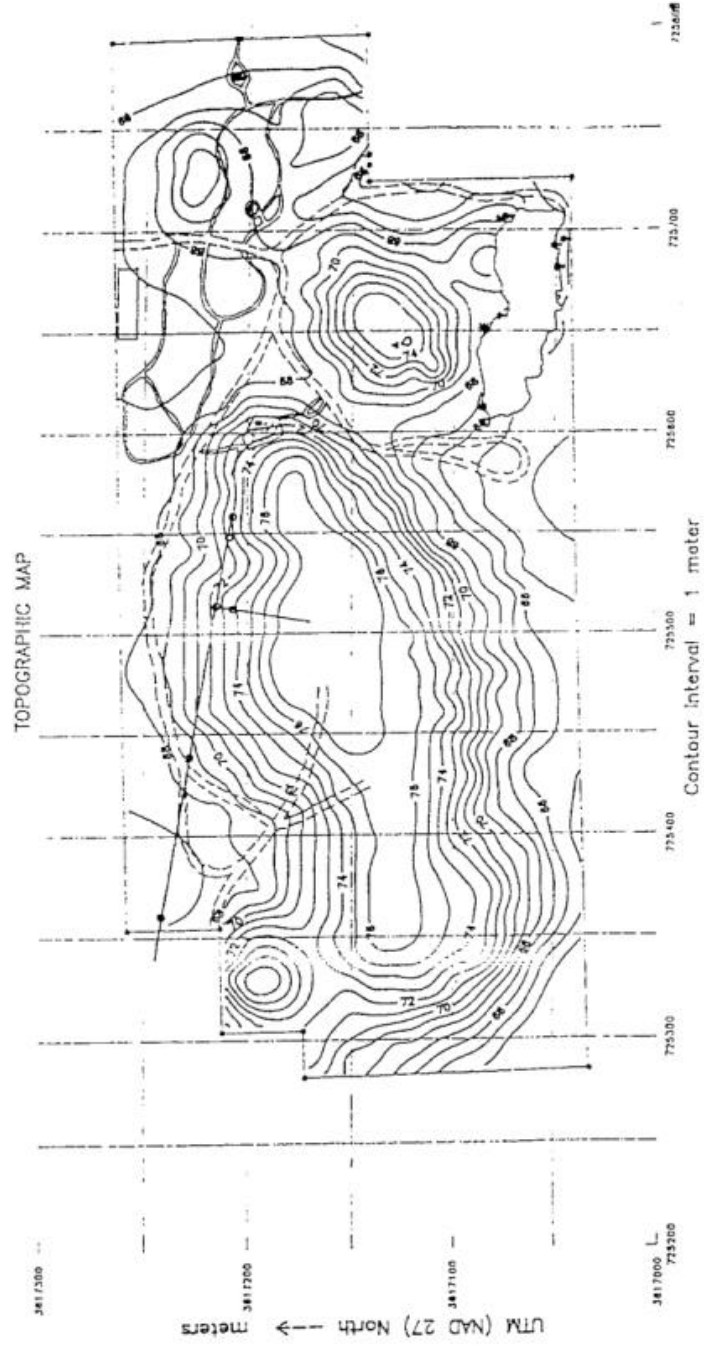


Name _____

Date _____

CONSERVATION GARDEN & DUCK POND

Figure 1



Field Trip Evaluation

What was the best part of the trip?

What part of the trip did you like the least?

Garden Rules and Regulations

1. Please remember that this is a special place for plants and animals, and is different from a park or playground. Act as if you are in someone else's home.
2. All plants, animals and artifacts are important. Do not pick flowers, berries, leaves, cactus joints, etc. Many of the plants in this garden are protected by state law. You may take drawings, pictures and memories.
3. If you move any rocks, sticks or logs, please put them back as you found them.
4. Avoid littering any trails; in fact, please pick up any litter you might see and put it in the appropriate trashcans.
5. Please keep to designated trails. Avoid stepping on plants or animals.
6. There are limited water fountains, so bring a water bottle.
7. Please do not climb any trees or on any antique farm machinery.
8. No wading or swimming allowed in the pond.
9. Do enjoy yourself, go exploring, and use all your senses to enjoy the Garden.
10. Plants and wildlife can be hazardous.